

OSS NEWSLETTER & FORECAST

<http://www.oss.cc>

Table of Contents

Market Comments	2
Review	2
Week Ahead.....	2
Financial Events for the Coming Week	3
This Week's OSS INDICATORS Indicators	4
Last Week's OSS INDICATORS Results	5
Last Week's OSS INDICATORS Scoreboard	6
Charts	7
This Week's Lesson: Venus Trine Mars	8
Option Trades	10
OSS Subscription Services	11



Insight in market movements
www.markettiming.nl



<http://www.urbansurvival.com/>



Wall Street Forecaster Blog

<http://wsf.typepad.com/>

Market Comments

UPDATED FORECAST— Cloudy .

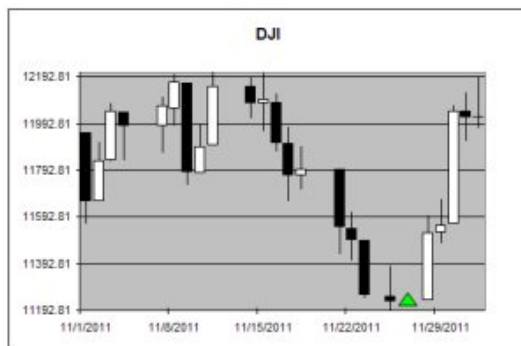
Review

Last week's forecast: "Cloudy "

I should have stuck with the previous week's forecast of "Could see some sunny times." It appears we got off by a week due to Thanksgiving. So this week I'll stick with the "Cloudy" forecast.

The support mentioned in last week's letter held up, and the equity markets skyrocketed. Reach a high of the week of 8%.

The "A" reversal over the weekend worked-out perfectly.



Week Ahead

RADIATION STORM AND CME ALERT: A solar radiation storm is in progress around Earth. At the moment, the storm is classified as minor, which means it has little effect on our planet other than to disturb HF radio transmissions at high latitudes. Bigger effects, however, may be in the offing. The same blast that caused the radiation storm also hurled a CME into space at about 930 km/s (2 million mph). According to analysts at the Goddard Space Weather Lab, the CME will reach Earth on Nov. 28th at 17:21 UT (+/- 7 hours).

The markets usually drop one week after such events. So we should see a move lower this week.

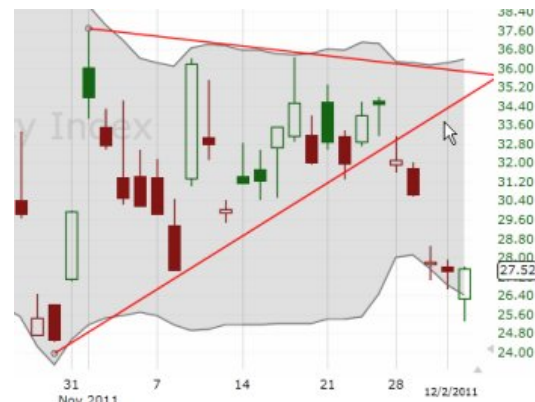
This week we have markets sitting a resistance, and Mercury reached its mid-point this weekend. More often than not, this is associated with sharp change in direction.

Technical indicators are in the overbought area.

For some time now a sense of panic has been lingering right off stage. It could take main stage this week or next has our old friend of sudden surprises, Uranus, makes an appearance this week by ending its

retrograde movement. Remember that Mercury is retrograde at this time. So what we have here is mistakes, miscommunication, and sudden unexpected surprises. Should be quite a week!

The VIX broke-out of the wedge, but is now showing signs of a bounce of the 10/28 low of 24.44. Also, it is approaching the apex of the wedge that is often another change in direction. If the 10/28 low is taken out, then a strong rally in the markets is highly likely, but a look at other indicators, I will be expecting a pull-back this week.



On Monday, Venus will form a Trine aspect with Mars. What should we expect? See This Week's Lesson

CRAMER: 'We Are In DEFCON 3, Two Stages Away From a Financial Collapse So Huge It's Hard To Get Your Mind Around'

<http://www.businessinsider.com/cramer-we-are-in-defcon-3-two-stages-away-from-a-financial-collapse-so-huge-its-hard-to-get-your-mind-around-2011-11>

HAPPY TRADING!

Financial Events for the Coming Week

Source: [MyPivots](#)

Monday, 05-December-2011

10:00 AM Factory Orders
 10:00 AM ISM Non-Mfg Index
 11:00 AM 4-Week Bill Announcement
 11:30 AM 3-Month Bill Auction
 11:30 AM 6-Month Bill Auction

Tuesday, 06-December-2011

07:45 AM ICSC-Goldman Store Sales
 08:55 AM Redbook
 11:30 AM 4-Week Bill Auction
 03:00 PM Treasury STRIPS

Wednesday, 07-December-2011

07:00 AM MBA Purchase Applications
 10:00 AM Quarterly Services Survey
 10:30 AM EIA Petroleum Status Report
 03:00 PM Consumer Credit

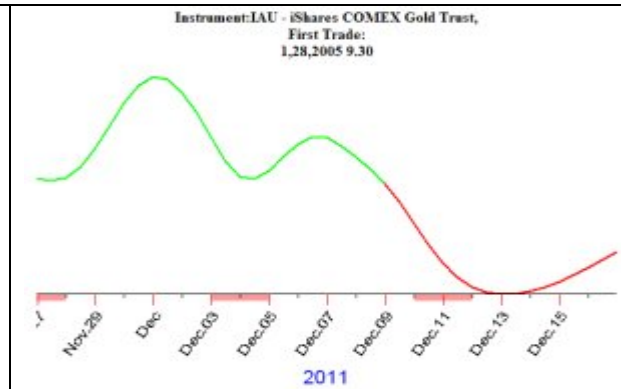
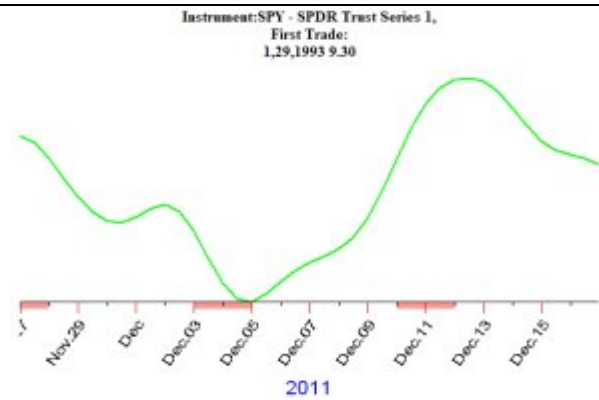
Thursday, 08-December-2011

12:00 AM Index Futures Rollover
 08:30 AM Jobless Claims
 09:00 AM 3-Yr Note Announcement
 09:00 AM 10-Yr Note Announcement
 09:00 AM 30-Yr Bond Announcement
 09:45 AM Bloomberg Consumer Comfort Index
 10:00 AM Wholesale Trade
 10:30 AM EIA Natural Gas Report
 11:00 AM 3-Month Bill Announcement
 11:00 AM 6-Month Bill Announcement
 11:00 AM 52-Week Bill Announcement
 11:00 AM 5-Yr TIPS Announcement
 04:30 PM Fed Balance Sheet
 04:30 PM Money Supply

Friday, 09-December-2011

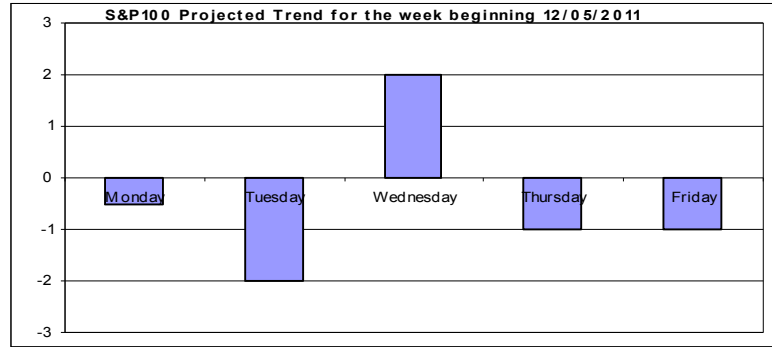
08:30 AM International Trade
 09:55 AM Consumer Sentiment

Astro Trend Graphs



This Week's OSS INDICATORS

The Projected Trend graph is showing a large move on Tuesday and/or Wednesday.



Columns:

R – Reversals. A=astrological, C=Cyclical, G=Gann

T1 and T2 – Trend. Expected direction of the market

() indicate the indicator appears on Sunday or Saturday

V – Volatility. Larger the number, the bigger the expected move.

M – Moon. Phase: NM = New Moon, 2nd = Second Quarter, FM = Full Moon, 4th = Last Quarter

Declination: 0=0°, DN=Max declination north, DS=Max declination south

DATE	R	V	T1	T2	M	CLOSE	CHG	CHG%	HIGH	HIGH %	LOW	LOW%
12/05/11	(A)	4		-								
12/06/11				-								
12/07/11				-								
12/08/11		1		-								
12/09/11			-	-	(DN)							

Moon reaches max declination on Saturday the 10th. The market usually does poorly around this time.

A V-indicator of 4 is unusually high. If it was any other day than Monday, I would expect it to be the day the markets make their largest move, but in the past, the V-Indicator does not work so well on Monday. It is as if the influence has dissipated over the weekend. But it could still work. If we see a 200 point move in the DJI on Monday, then that should be the largest move for the week.

The "A" reversal on Sunday is Mercury retrograde reaching its mid-point.

Everything is pointing to a down week. I expect most of the action will be in the latter part of the week. With T1 and T2 indicators being negative on Friday, and the Moon moving towards its max declination, plus Uranus going stationary direct, well, what can I say, it should be exciting. I want to be on the short side this week.

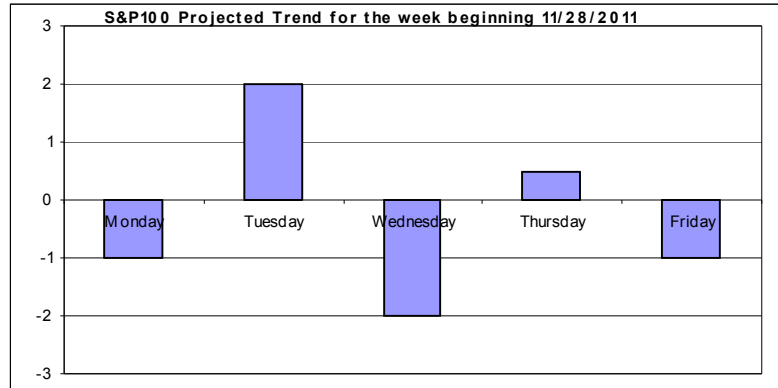
SECTOR / ETF	SYMBOL	Forecast	Close	Low	Low%	High	High%
Consumer Discert.	XLY						
Consumer Staples	XLP						
Energy	XLE	-1					
Financial	XLF	-1					
Health Care	XLV	-1					
Industrial	XLI						
Material	XLB	-1					
Technology	XLK						
Utilities	XLU						
Gold	GLD						
Silver	SLV	-1					
US Dollar	UUP	1					
Oil	OIL	-1					

Greater than 1 = expect move higher

Less than -1 = expect move lower

Last Week's OSS INDICATORS Results

The Projected Trend graph is showing a choppy ride.



Columns:

R – Reversals. A=astrological, C=Cyclical, G=Gann
T1 and T2 – Trend. Expected direction of the market

V – Volatility. Larger the number, the bigger the expected move.

M – Moon. Phase: NM = New Moon, 2nd = Second Quarter, FM = Full Moon, 4th = Last Quarter

Declination: 0=0°, DN=Max declination north, DS=Max declination south

DATE	R	V	T1	T2	M	CLOSE	CHG	CHG%	HIGH	HIGH %	LOW	LOW%
11/28/11		1		-		537.21	14.94	2.86%	16.88	3.23%	0	0.00%
11/29/11		1		-		538.95	1.74	0.32%	5.42	1.01%	-0.07	-0.01%
11/30/11		1		-		561.96	23.01	4.27%	23.03	4.27%	0.29	0.05%
12/01/11			-	-		561.13	-0.83	-0.15%	1.45	0.26%	-3.33	-0.59%
12/02/11		2	+	-	1st	561.85	0.72	0.13%	7.06	1.26%	0.36	0.06%

Thursday or Friday should see a move greater than 1%.














Monday could be a large mover too, but should not be larger than the one coming later in the week.

SECTOR / ETF	SYMBOL	Forecast	Close	Low	Low%	High	High%
Consumer Discert.	XLY		36.33	37.44	3.00%	39.54	9.00%
Consumer Staples	XLP	2	30.37	30.85	2.00%	32.1	6.00%
Energy	XLE		63.83	66.22	4.00%	71.54	12.00%
Financial	XLF		11.78	12.07	2.00%	13.15	12.00%
Health Care	XLV		31.71	32.56	3.00%	34.16	8.00%
Industrial	XLI		31.16	32.21	3.00%	34.24	10.00%
Material	XLB	2	31.41	32.59	4.00%	34.8	11.00%
Technology	XLK		24.01	24.67	3.00%	26.02	8.00%
Utilities	XLU		33.43	33.85	1.00%	35.32	6.00%
Gold	GLD		163.4	166.63	2.00%	170.8	5.00%
Silver	SLV		30.20	31.03	3.00%	32.53	8.00%
US Dollar	UUP		22.42	22.05	-2.00%	22.34	0.00%
Oil	OIL		24.50	24.93	2.00%	25.9	6.00%

Greater than 1 = expect move higher

Less than -1 = expect move lower

Last Week's OSS INDICATORS Scoreboard

Projected Trend		Some large moves on Tuesday and Wednesday would have indicated a large move on one of those days. DJI rallied 490 points on Wednesday.
V-Indicator	   	We had 3 1's in the first three days of the week, plus an astrological sign there should be a large move. I had written: "Monday could be a large mover too, but should not be larger than the one coming later in the week." We did get a large move on Monday, and it was less than the move on Wednesday. Friday's level 2 did correspond with a move greater than 1%, but it was not the largest move for the week.
T1-Indicator	 	Thursday was down. Friday was up.
T2-Indicator		Over a long period of time, this is a fairly good indicator, but lately has been about 50%. If it predictive results do not show a great improvement over the next couple of weeks, it will be dropped.
SECTOR / ETF		Only 2 SPDR's generate a signal, and both were +2. That would have indicated a move higher for the equity markets.
Week Ahead		In the Week Ahead section, I had written that Gold and Silver should move higher
Astro Trends	 	IAU was in the green, and moving higher. It gapped up at the beginning of the week, and reached a high of +5% SPY was in the green, but showed a move down in the beginning of the week. Mixed signals.
Reversals		The "A" reversal that occurred on Sunday corresponded perfectly with the markets change of direction. I did not make much of this reversal due to the previous week being a holiday week

 Right

 Wrong

 Comment

Charts

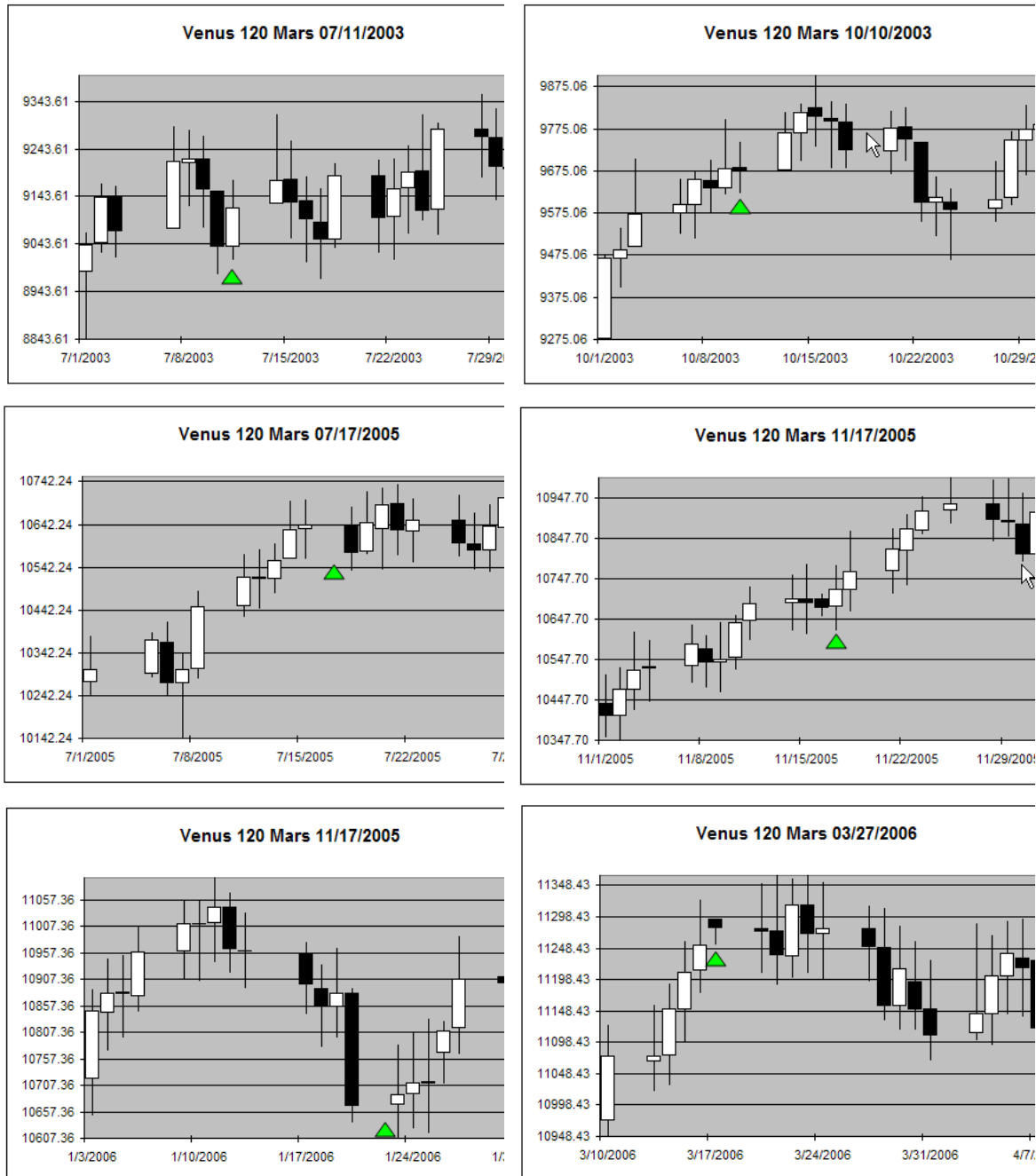
Simple Moving Averages: 20-period 50-period

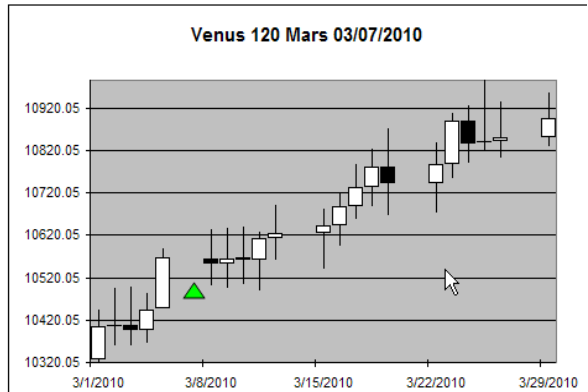
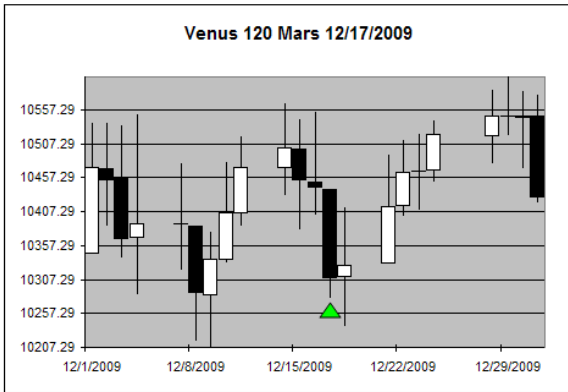
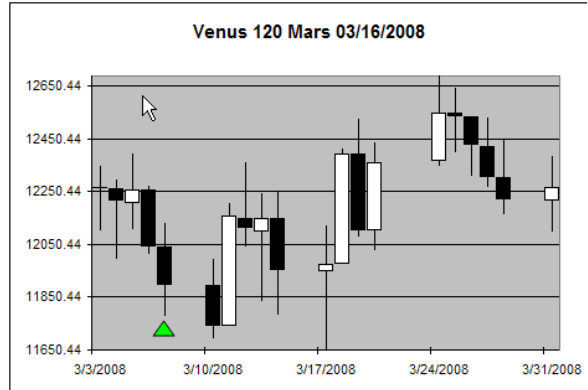
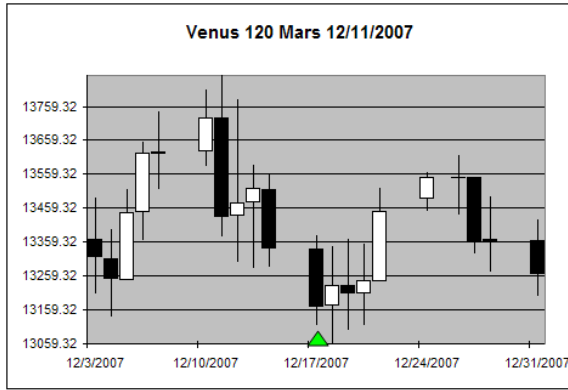


This Week's Lesson: Venus Trine Mars

Below are at the last 10 times the Venus Trine Mars aspect occurred. A Trine aspect is when two planets are 120° apart, and is considered a favorable aspect.

We would expect the stock market to rally for 4-5 days into this aspect, but the charts show a different outcome. The market rallied only 4 times, and moved down the other 6 times. Of special interest is all 6 times the market moved down into this aspect, a rally was seen in the few days following the day the aspect occurred.





Option Trades

Interactive results may be viewed at: http://www.oss.cc/oss_Results.asp

Start with \$5000. \$1000 per trade

OPTION	ENTRY DATE	ENTRY PRICE	EXIT DATE	EXIT PRICE	PROFIT	HIGHEST	HIGHEST%	\$5,000.00
OEX JAN11 585 CALLS	1/3/2011	\$1.55	1/7/2011	\$2.33	50%	\$2.35	52%	\$5,500.00
OEX JANWK1 575 CALL	1/3/2011	\$0.88	1/3/2011	\$1.76	100%	\$2.49	183%	\$6,500.00
OEX JAN11 550 PUTS	1/5/2011	\$1.10	1/7/2011	\$0.55	-50%	\$1.50	36%	\$6,000.00
OEX JANWK2 575	1/10/2011	\$1.35	1/13/2011	\$0.68	-50%	\$7.00	419%	\$5,500.00
OEX JANWK4 560 CALL	1/21/2011	\$0.85	1/21/2011	\$0.43	-50%	\$0.85	0%	\$5,000.00
NKE FEB11 85 CALL	1/26/2011	\$0.78	2/3/2011	\$1.56	100%	\$2.80	259%	\$6,000.00
ERTS FEB11 15 CALL	2/1/2011	\$1.00	2/15/2011	\$2.00	100%	\$4.50	350%	\$7,000.00
OEX FEB11 570 PUT	2/3/2011	\$1.75	2/7/2011	\$0.88	-50%	\$1.75	0%	\$6,500.00
RIMM MAR11 62.50 PUTS	2/15/2011	\$1.15	2/16/2011	\$0.77	-33%	\$1.55	35%	\$6,170.00
POT MAR11 165 PUTS	2/18/2011	\$1.07	2/18/2011	\$2.14	100%	\$2.26	111%	\$7,170.00
OEX MAR11 540 PUTS	3/1/2011	\$1.00	3/4/2011	\$0.50	-50%	\$1.20	20%	\$6,670.00
OEX MAR11 570 PUTS	3/8/2011	\$1.30	3/10/2011	\$2.60	100%	\$7.00	438%	\$7,670.00
OEX MARWK2 585 PUTS	3/8/2011	\$1.25	3/10/2011	\$2.50	100%	\$4.80	284%	\$8,670.00
WYNN MAR11 122 PUTS	3/10/2011	\$1.40	3/11/2011	\$2.80	100%	\$3.45	146%	\$9,670.00
OEX APR11 460 PUTS	3/16/2011	\$1.40	3/17/2011	\$0.70	-50%			\$9,170.00
OEX APR11 510 PUTS	3/21/2011	\$1.00	3/22/2011	\$0.50	-50%			\$8,670.00
CF MAY11 115 PUTS	4/7/2011	\$1.28	4/12/2011	\$2.00	50%	\$2.23	74%	\$9,170.00
WGO MAY11 12.50 PUTS	4/12/2011	\$0.80	4/12/2011	\$0.40	-50%	\$1.15	44%	\$8,670.00
OEX MAY11 555 PUTS	4/26/2011	\$1.15	4/27/2011	\$0.55	-50%	\$1.15	0%	\$8,170.00
BBY MAY11 32 PUTS	5/3/2011	\$1.25	5/7/2011	\$1.60	28%	\$1.70	36%	\$8,450.00
BRCD MAY11 7 PUTS	5/3/2011	\$0.90	5/7/2011	\$0.80	-11%	\$0.90	0%	\$8,340.00
CAT MAY11 110 PUTS	5/3/2011	\$1.15	5/4/2011	\$2.30	100%	\$8.30	622%	\$9,340.00
KKR MAY11 18 PUTS	5/3/2011	\$0.40	5/5/2011	\$0.80	100%	\$1.00	150%	\$10,340.00
OEX MAYWK2 605 CALLS	5/9/2011	\$0.95	5/10/2011	\$1.90	100%	\$2.10	121%	\$11,340.00
NVLS JUN11 35 PUTS	5/17/2011	\$1.40	6/17/2011	\$2.10	50%			\$11,840.00
AMGN JUN11 60 PUTS	5/17/2000	\$1.63	5/17/2011	\$0.80	-50%			\$11,340.00
SLGN JUN11 45 CALLS	5/19/2011	\$1.50	5/23/2011	\$0.75	-50%			\$10,840.00
HGSI JUN11 29 CALLS	5/19/2011	\$0.80	5/20/2011	\$0.40	-50%			\$10,340.00
CSCO JUN11 16 CALLS	6/1/2011	\$0.80	6/2/2011	\$0.40	-50%			\$9,840.00
FST JUL11 27 PUTS	6/28/2011	\$1.20	7/1/2011	\$0.60	-50%	\$2.87	139%	\$9,340.00
UAL JUL11 24 PUTS	6/28/2011	\$1.20	7/6/2011	\$1.80	50%			\$9,840.00
AIG JUL11 30 PUTS	6/28/2011	\$1.47	7/1/2011	\$0.73	-50%			\$9,340.00
SLV AUG11 40 CALLS	7/18/2011	\$1.53	7/21/2011	\$0.76	-50%	\$2.00	31%	\$8,840.00
OEX AUG11 615 CALLS	7/20/2011	\$1.80	7/21/2011	\$3.60	100%			\$9,840.00
OIL AUG11 26 PUTS	7/22/2011	\$1.45	8/4/2011	\$2.90	100%	\$5.00	245%	\$10,840.00
OEX AUG11 625 CALLS	7/25/2011	\$1.10	7/27/2011	\$0.55	-50%			\$10,340.00
GLD AUG11 153 PUTS	7/25/2011	\$1.20	7/26/2011	\$0.60	-50%			\$9,840.00
GLD AUG11 163 CALLS	8/1/2011	\$1.00	8/2/2011	\$2.00	100%	\$17.00	1600%	\$10,840.00
OEX AUG11 460 PUTS	8/8/2011	\$1.70	8/8/2011	\$3.40	100%	\$7.80	359%	\$11,840.00
GLD SEPT11 193 CALLS	8/18/2011	\$1.10	8/19/2011	\$1.65	50%			\$12,340.00

OSS Subscription Services

Subscribe here: http://www.oss.cc/oss_Subscription.asp

Subscribers to the **Option Signal Service** will be notified when to take action.

Price: \$89.95 per month. The **OSS Indicator Service** is included free.

30-day risk free trial!

Subscribers to the **OSS Indicator Service** receive all indicators for the next two weeks each Sunday so you know what to expect.

Price: \$49.95 per month.

View Sample: http://www.oss.cc/OSS_INDICATORS_101206.pdf

30-day risk free trial!

Please contact me with any questions/comments.

--Rob

The Option Signal Service

Copyright 2003-2011 Handler & Associates, Inc.

To unsubscribe, reply to this e-mail with the work "Remove" as the body.